

DIGITAL CAMERA

X half

New Features Guide

X-HF1

Version 1.20



Features added or changed as a result of firmware updates may no longer match the descriptions in the documentation supplied with this product. Visit our website for information on the updates available for different products:

<https://fujifilm-x.com/support/download/firmware/cameras/>

Contents

The features listed below have been added, deleted, or updated in X-HF1 firmware version 1.20. For the latest manuals, visit the following website.

<https://fujifilm-dsc.com/en/manual/>

No.	Description	X-HF1 	See 	Ver.
1	The pairing procedure between the camera and smartphone has been changed.	90	1	1.20

Changes and Additions

Changes and additions are as follows.

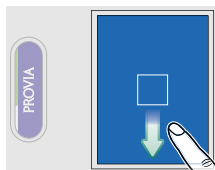
X-HF1 Owner's Manual:  90

Ver. 1.20

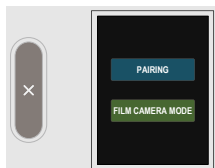
Connecting to a Smartphone

- 1 Swipe down on the LCD monitor in the shooting display.

The pairing screen will be displayed.

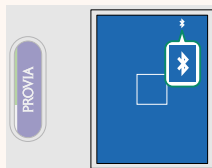


- 2 Tap **PAIRING**.



- 3** Launch the app on the smartphone and pair it with the camera to display a code on the smartphone and the camera. Confirm that both codes match to pair.

A Bluetooth icon in the camera display changes from gray to white when a connection is established.



- Once the devices have been paired, the smartphone will automatically connect to the camera when the app is launched.
- Disabling Bluetooth when the camera is not connected to a smartphone reduces the drain on the battery.

This image shows a single sheet of white paper with horizontal ruling lines. The lines are evenly spaced and run across the width of the page. There are no margins, text, or other markings on the paper.

FUJIFILM

FUJIFILM Corporation

7-3, AKASAKA 9-CHOME, MINATO-KU, TOKYO 107-0052, JAPAN

<https://fujifilm-x.com>

